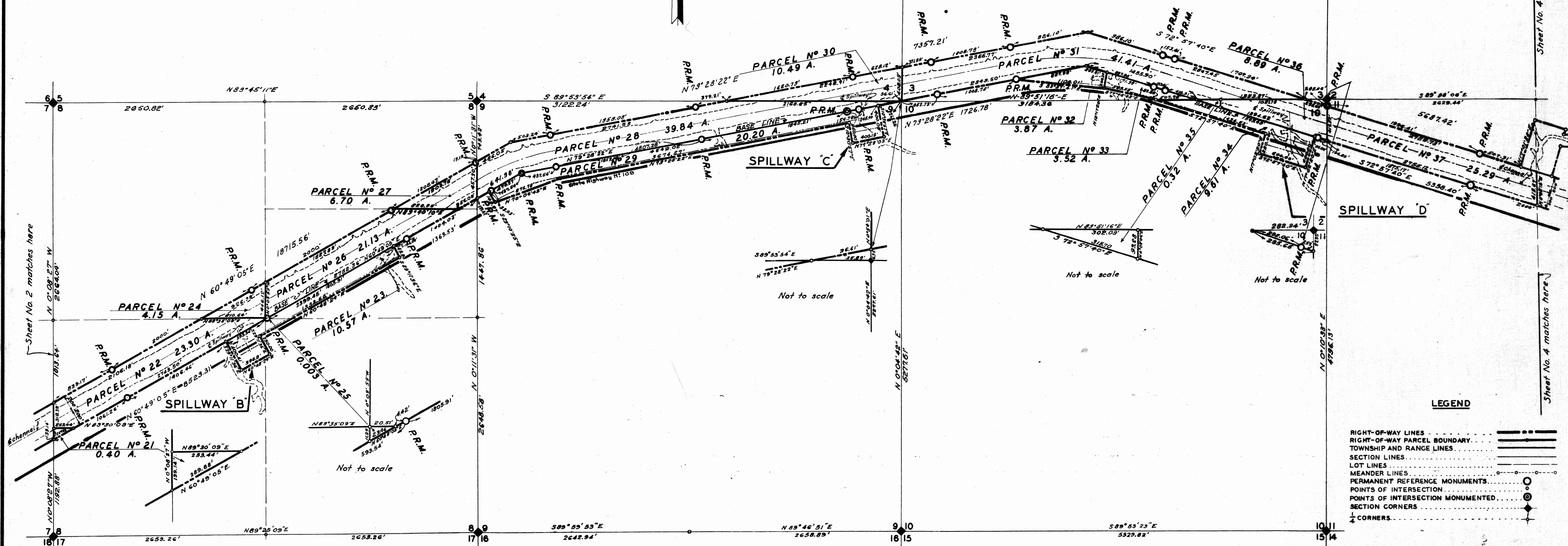
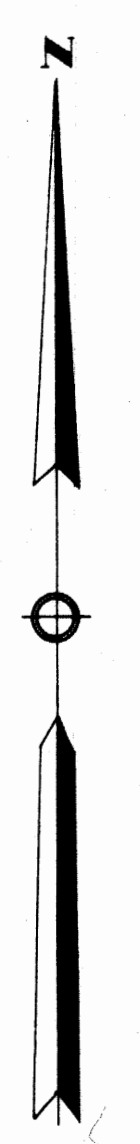


Sheet 3 of File No 18375 of 2-35

PARCEL	DIVISION	SECTION	TOWNSHIP	RANGE	ACREAGE	D.O. INDEX NO	DATE	METHOD	PRICE PAID	PARTY OR PARTIES FROM WHOM ACQUIRED
21	G	8	405	38 E	0.40	3521				
22	G	8	405	38 E	23.30	3522				
23	G	8	405	38 E	10.57	3523				
24	G	8	405	38 E	4.15	3524				
25	G	8	405	38 E	0.003	3525				
26	G	8	405	38 E	21.13	3526				
27	G	8	405	38 E	6.70	3527				
28	G	9	405	38 E	39.84	3528				
29	G	9	405	38 E	20.20	3529				
30	G	4	405	38 E	10.49	3530				
31	G	3	405	38 E	21.41	3531				
32	G	3	405	38 E	3.87	3532				
33	G	3	405	38 E	3.52	3533				
34	G	10	405	38 E	9.61	3534				
35	G	10	405	38 E	0.32	3535				
36	G	10	405	38 E	8.89	3536				
37	G	11	405	38 E	25.29	3537				

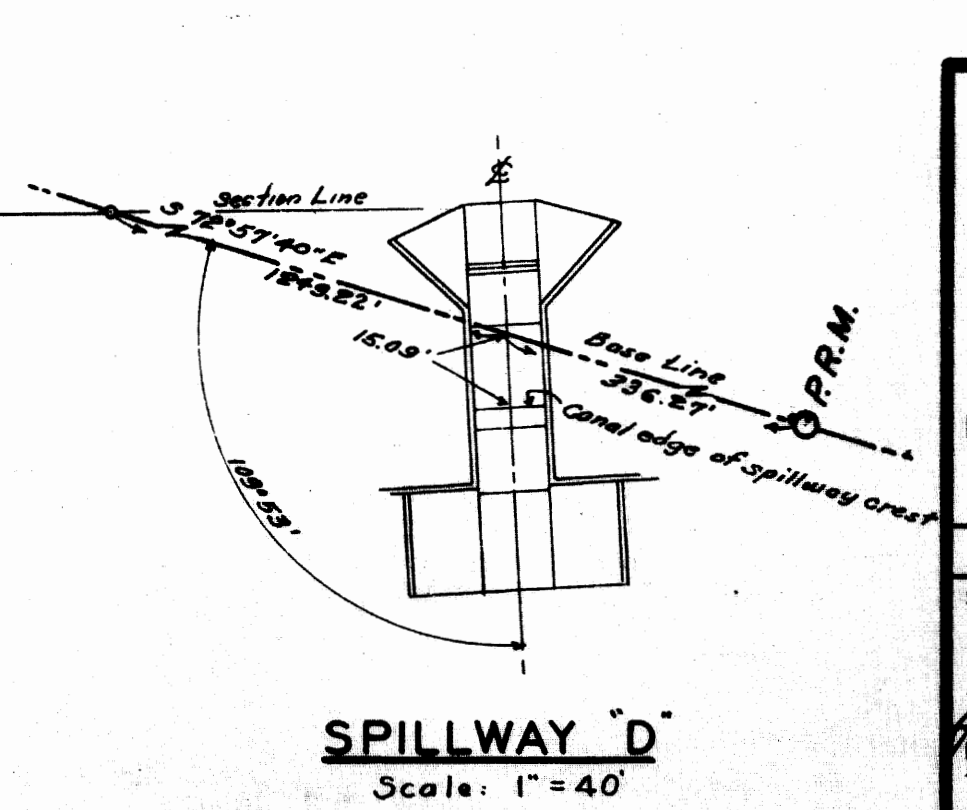
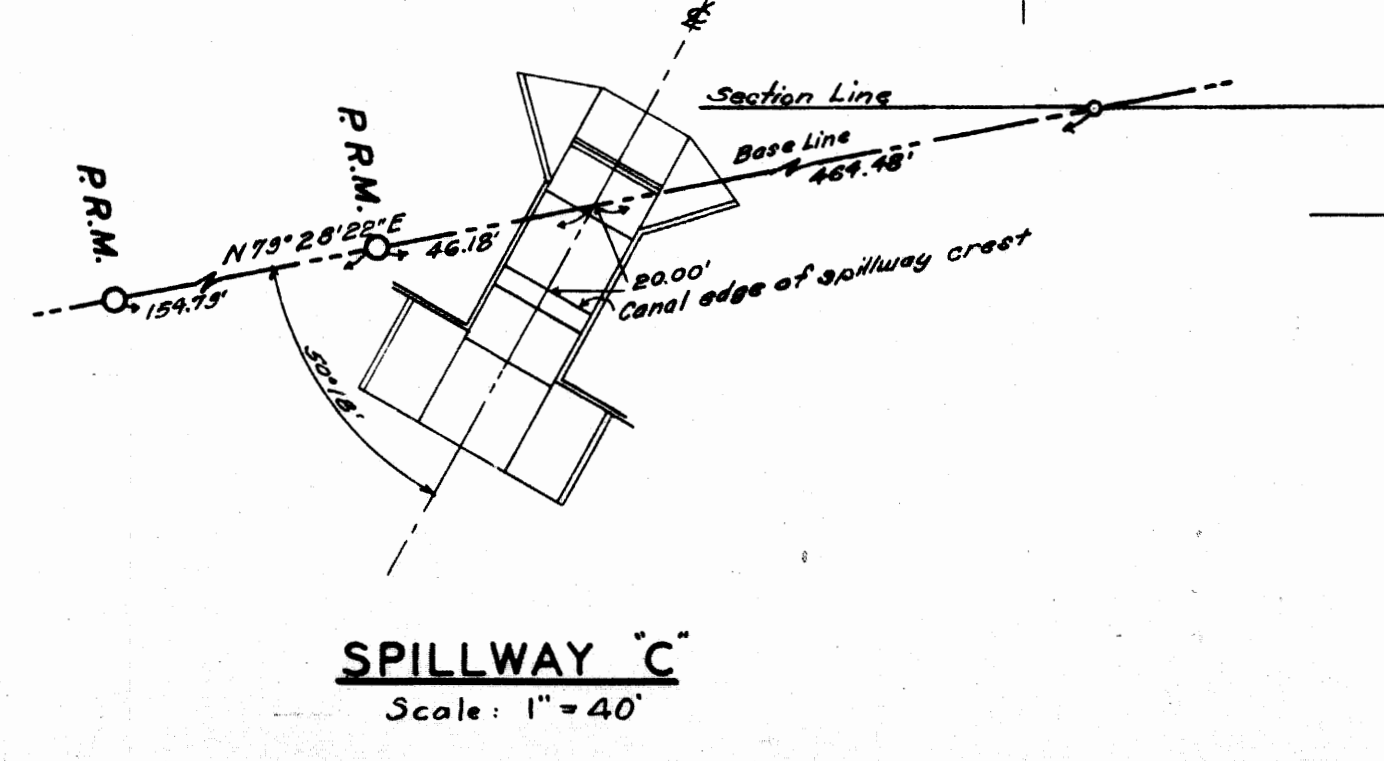
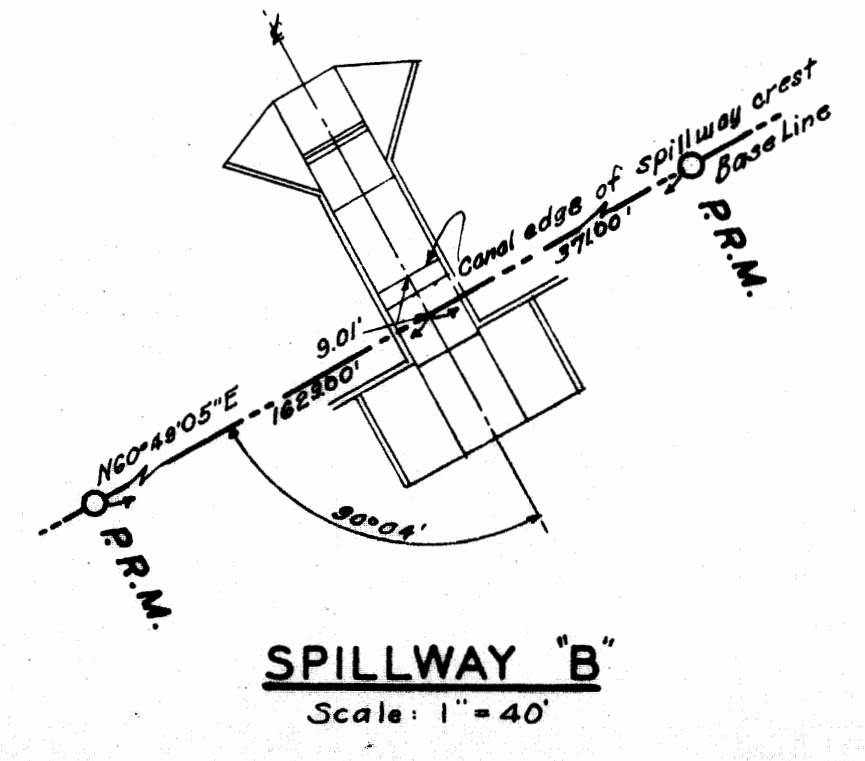
TOWNSHIP 39 S.
TOWNSHIP 40 S.

TOWNSHIP 40 S.
RANGE 38 E
MARTIN COUNTY



LEGEND

- RIGHT-OF-WAY LINES
- RIGHT-OF-WAY PARCEL BOUNDARY
- TOWNSHIP AND RANGE LINES
- SECTION LINES
- LOT LINES
- MEANDER LINES
- PERMANENT REFERENCE MONUMENTS
- POINTS OF INTERSECTION
- POINTS OF INTERSECTION MONUMENTED
- SECTION CORNERS
- 1/4 CORNERS



CALOOSAHATCHEE RIVER AND LAKE OKEECHOBEE DRAINAGE AREAS, FLORIDA.
MAP SHOWING LOCATION OF RIGHTS-OF-WAY FOR ST. LUCIE CANAL IMPROVEMENTS IN MARTIN COUNTY, FLORIDA.

IN 8 SHEETS SCALE: 1" = 600' SHEET NO. 3

U. S. ENGINEER OFFICE - JACKSONVILLE, FLORIDA, JULY, 1939.

SUBMITTED: [Signature] ASSISTANT ENGINEER
RECOMMENDED FOR APPROVAL: [Signature] SENIOR ENGINEER
APPROVED: [Signature] COLONEL, CORPS OF ENGINEERS

DRAWN BY: K.C.D.S. FILE NO. 302-12,260
TRACED BY: C.C.K.
CHECKED BY: R.N.S.

Sheet No. 2 matches here

Sheet No. 4 matches here